



Scotchcal™ High Performance
Striping Tape

Color and Pattern Guide

3M™ Scotchcal™

High Performance Striping Tape

Color Name/Number

Duo-Tone 746 - __

Elite Striping 748-__

Color Name/Number



10 Burgundy

~~74 Burgundy Metallic~~

66 Dark Red

04 Red

76 Tomato Red

68 Bright Orange

~~67 Bright Yellow~~

09 Dark Blue

~~31 Royal Blue~~

08 Blue

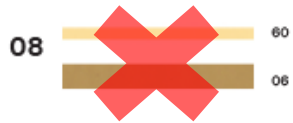
~~41 Azure Blue~~

16 Black Stardust

Two-Color Pattern



5/16" x 150' roll



Two-Color Pattern



3/16" x 150' roll



01 White

56 Bright White

~~24 Dark Brown~~

~~07 Brown~~

~~70 Brown Metallic~~

~~51 Dark Tundra~~

~~21 Nutmeg~~

~~06 Buckskin~~

17 Tan

~~60 Camel Beige~~

~~25 Gold Starfire~~

03 Gold Metallic



These Swatches Do Not Print

02 Black

93 Low Gloss Black

~~97 Medium Dark Gray~~

63 Charcoal Metallic

~~12 Ultra Charcoal~~

50 Light Charcoal Metallic

19 Medium Gray

83 Medium Silver Metallic

14 Light Slate Metallic

05 Silver Metallic

20 Silver Starfire

~~23 Silver Chips~~

~~79 Pale Gray~~

28 Pewter

~~73 Gray~~

24  02
85

25  66
02

26  56
05

33  50
02

35  05
50

50  66
28

53  05
10

~~60  23
12~~

10  05
63

11  03
06

14  05
10

~~16  05
74~~

25  63
14

~~26  07
06~~

~~28  09
31~~

29  02
50

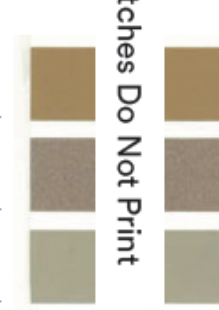
30  50
06

~~65  23
12~~

~~99 Bright Gold Metallic~~

85 Light Gold Metallic

78 Pastel Sandstone



How to order multi-color patterns by part number:

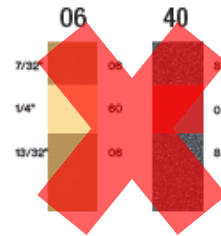
If multi-color pattern is 748, and the color combination number is 65, then the part number would be 748 65.

Paint Break Stripe 740-__

Two-Color Pattern

7/8" x 150' roll

Fits Ford Ranger and F-Series Trucks

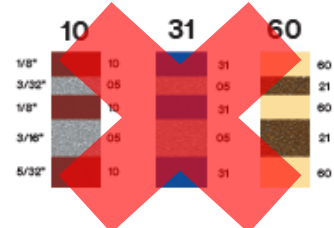


Paint Break Stripe 738-__

Two-Color Pattern

11/16" x 150' roll

Fits '91-'92 Ford Aerostar two-tone vehicles



Color and pattern availability subject to change.
Up-to-date availability charts can be found at
3M.com/strippingtapechart

Single Stripe

1/16"	701
1/32"	702
3/16"	705
1/4"	703

40' Roll
Linerless

1/4"	726
	150' Roll

3/8"	733
	150' Roll

1/2"	727
	150' Roll

5/8"	734
	150' Roll

3/4"	728
	150' Roll

7/8"	729
	150' Roll

1"	730
	150' Roll

2"	731
	150' Roll

How to order single color patterns by part number:

If single color pattern is 723 and the color is 01 (white), then the part number would be 723 01.

3M™ Scotchlite™ Reflective Film Series 680

Pattern No. 799-__

	Color	1/4" x 50'	1/2" x 50'	3" x 50'	1" x 50'	2" x 50'	4" x 50'	6" x 50'
	White (Silver)	01	21	31	41	61	71	81
	Black	02	22	32	42	62	72	82
	Gold	03	23	33	43	63	73	83
	Red	04	24	34	44	64	74	84
	Blue	05	25	35	45	65	75	85
	Orange	07	27	37	47	67	77	87
	Yellow	08	28	38	48	68	78	88

3M™ Scotchcal™ Application Accessories

Part Number	Item	Qty.
71601	Blue applicator squeegee	5/set
71602	Gold applicator squeegee	5/set
71607	Orange applicator squeegee	1/env
71603	Low friction sleeve	5/set
71606	Felt block	1/each
71608	Air release tool with 1 replacement tip	1/each
71609	Air release tool replacement tips	5/set

3M™ Premask/Application Tape

This tape is primarily used as a protective layer when applying graphics.

Part Number	Size
75906	6" x 150'
75951	15.5" x 150'
76051	23.5" x 150'

Color and pattern availability subject to change. Up-to-date availability charts can be found at [3M.com/strippingtapechart](http://3M.com/strippingtape)

Warranty and Limited Remedy:
3M warrants that each 3M product meets the applicable 3M product specification at the time 3M ships the product. 3M MAKES NO OTHER EXPRESS OR IMPLIED WARRANTIES OR CONDITIONS, INCLUDING ANY IMPLIED WARRANTY OR CONDITION OF MERCHANTABILITY OR FITNESS FOR A PARTICULAR PURPOSE. If the 3M product does not conform to this warranty, the sole and exclusive remedy is, at 3M's option, replacement of the 3M product or refund of the purchase price.

Limitation of Liability:
Except where prohibited by law, 3M will not be liable for any loss or damage arising from the 3M product, whether direct, indirect, special, incidental or consequential, regardless of the legal theory asserted.

3M Automotive Aftermarket Division
3M Center, Building 223-6N-01
St. Paul, Minnesota 55144-1000 U.S.A.
Phone: 1-877-666-2277
www.3M.com/strippingtape

Printed in U.S.A.
© 3M 2016 All rights reserved.
60-4400-7615-0 (407.5)ii

3M, Scotchcal, and Scotchlite are trademarks of the 3M Company.
Part No. 051141 83005

Double Stripe

Single Color

687-	150' roll	1/4"	1/16"	1/8"	1/16"
------	-----------	------	-------	------	-------

710-	50' roll				
------	----------	--	--	--	--

720-	150' roll	3/16"	1/16"	1/8"	1/16"
------	-----------	-------	-------	------	-------

721-	150' roll	7/16"	1/16"	3/16"	3/16"
------	-----------	-------	-------	-------	-------

722-	150' roll				
------	-----------	--	--	--	--

713-	50' roll				
------	----------	--	--	--	--

723-	150' roll	5/16"	1/16"	1/8"	1/8"
------	-----------	-------	-------	------	------

707-	50' roll				
------	----------	--	--	--	--

724-	150' roll	1/2"	1/8"	1/8"	1/4"
------	-----------	------	------	------	------

725-	150' roll	3/8"	1/16"	1/8"	3/16"
------	-----------	------	-------	------	-------

732-	150' roll	1/4"	1/16"	1/8"	1/8"
------	-----------	------	-------	------	------